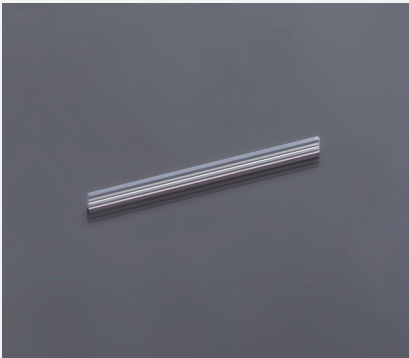


# Fast Axis Collimator

## FAC160 FS



### Features and Advantages

Acylindrical biconvex lens for the collimation of the fast axis of diode lasers. The lens is made of low OH fused silica and optimized for diode laser bars with power > 300 W CW.

### Product Specifications

Specification Data	Unit	Value
Material		Fused Silica
Width (W)	mm	$0.8 \pm 0.05$
Thickness (T)	mm	$0.3 \pm 0.01$
Refractive index n @ 980 nm		1.451
Effective focal length (EFL) @ 980 nm	mm	0.160
Back focal length (BFL) @ 980 nm	mm	0.034
Numerical aperture (NA)		0.8
Transmission	%	> 99
Power within an angle of $\pm 3.6$ mrad <sup>(1)</sup>	%	> 85

Product Code	ZLE002070 <sup>(2)</sup>	
Specification Data	Unit	Value
Length (L)	mm	$12.0 \pm 0.05$
Clear aperture (Side A)	mm <sup>2</sup>	$10.5 \times 0.027$
Clear aperture (Side B)	mm <sup>2</sup>	$10.5 \times 0.262$
AR-Coating	nm	940 - 998
Surface imperfections (DIN ISO 10110-7)		5/5x0.025; C2x0.1; L2x0.025; E0.2

<sup>(1)</sup> Valid for an emitter-height of 1µm and no smile of the laser diode.

<sup>(2)</sup> Example for customization – design, dimensions & coatings on request.

### Product Drawing (mm)

